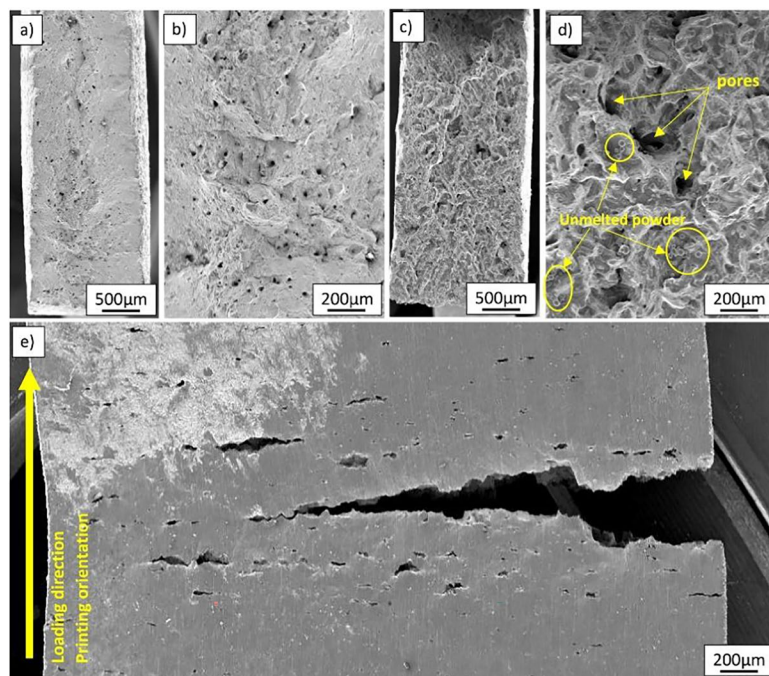


On the Cover: Fatigue Damage Evolution in SS316L Produced by Powder Bed Fusion in Different Orientations with Reused Powder Feedstock

© Society for Experimental Mechanics 2025



Fatigue Damage Evolution in SS316L Produced by Powder Bed Fusion in Different Orientations with Reused Powder Feedstock

by M. Kopec, U. Gunpath, G. Williams,
W. Macek, Z.L. Kowalewski, P. Wood.

Publisher's Note Springer Nature remains neutral with regard to jurisdictional claims in published maps and institutional affiliations.